



Trading Central MT4 Indicator User Guide

Prepared by
ICM Capital Ltd
Level 36,
One Canada Square,
Canary Wharf, London,
E14 5AB, United Kingdom

Tel: +44 207 634 9770
Fax: +44 207 516 9137
clientservices@ICMCapital.co.uk



Table of Contents

i.	Description	3
ii.	Subscribing to Trading Central feed	3
iii.	Installation process	4
iv.	Features and parameters	9
v.	Upgrade process	10

Description

TC.TechnicalAnalysis is an easy to install multilingual customizable Indicator designed to help traders make profitable decisions 24/5! TC.TechnicalAnalysis is a unique Indicator which allows your customers to see Trading Central's levels and strategies directly on live charts.

Actionable content, user friendly interface, customizable timeframes, the TC.TechnicalAnalysis Indicator also allows users to fill in orders and program trades based on Trading Central levels!



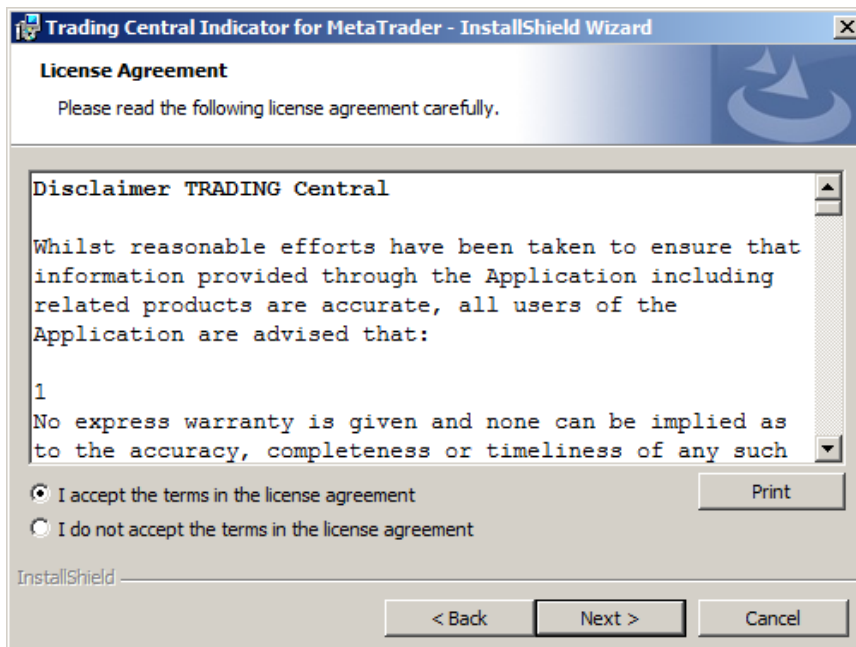
Subscribing to the Trading Central live feed

The Trading Central Indicator automatically delivers live data to licensed broker. If the Indicator does not work on your MT4 your broker is probably not licensed by Trading Central. In this case please contact your broker and request a license.

Installation process

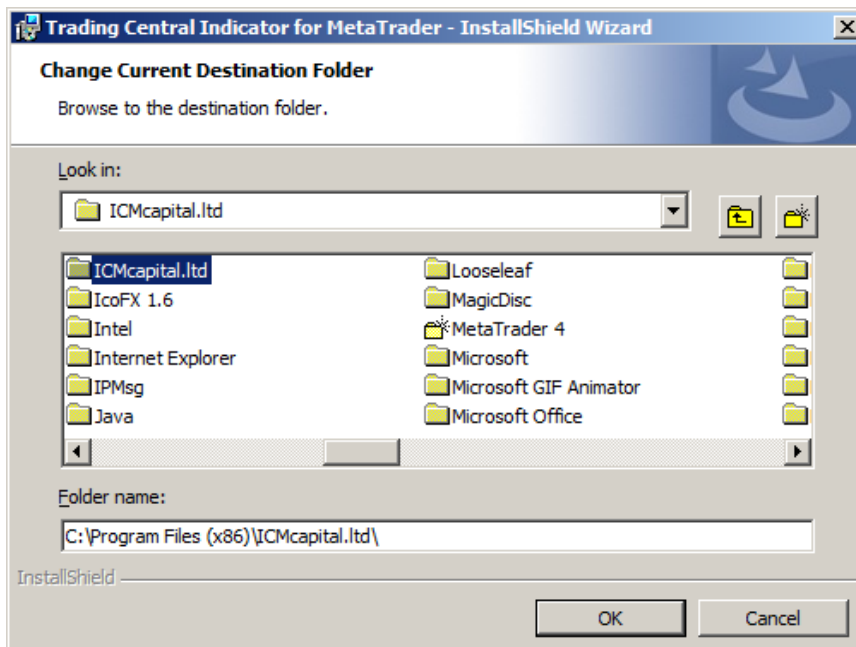
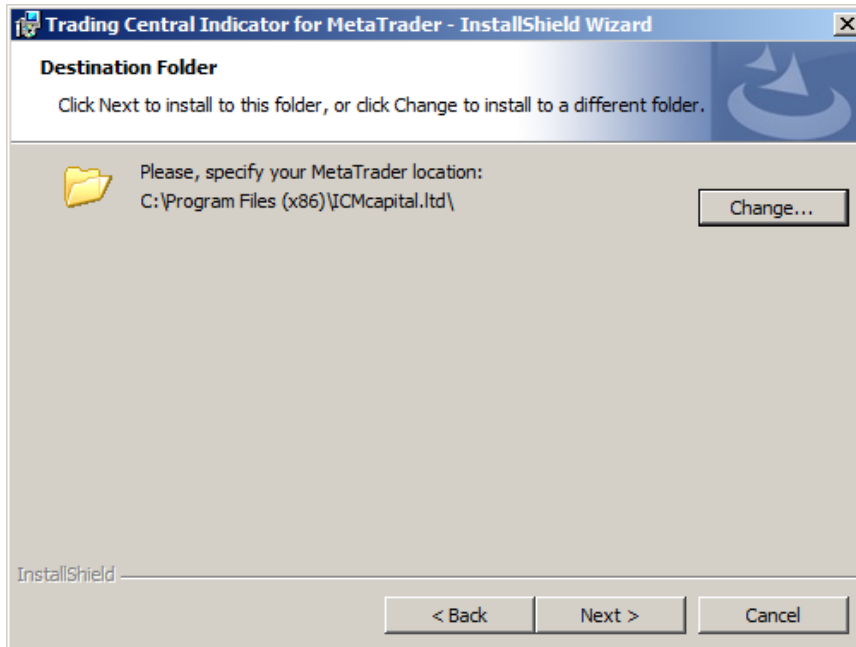
The latest version of our Indicator can be downloaded from http://www.tradingcentral.com/Install_Trading_Central_Indicator_for_MetaTrader/setup.exe

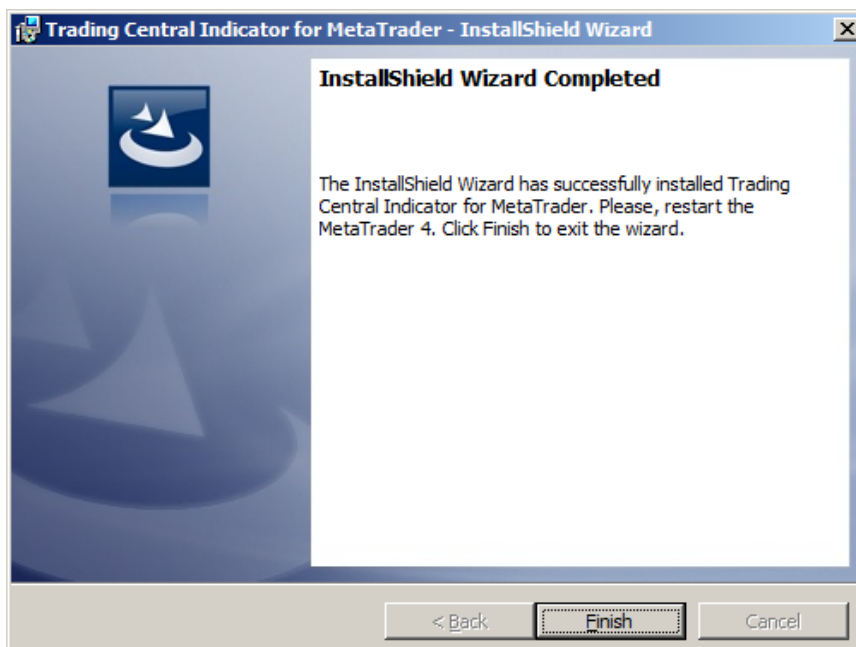
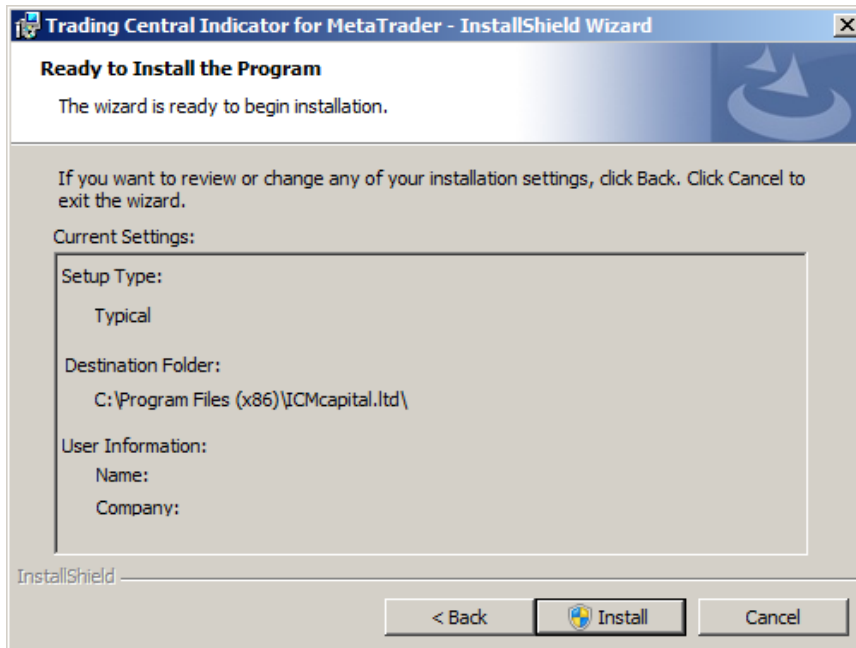
You need just follow some simple steps proposed by the installer:



Indicate the proper path to the MetaTrader folder you use.

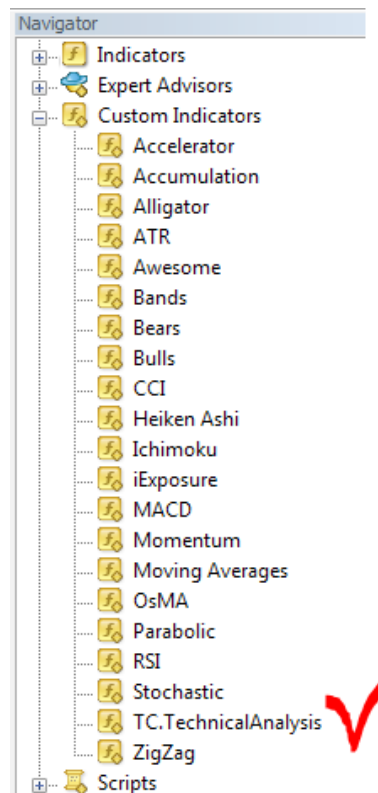
Attention! If you have several MetaTrader platforms installed, you need choose the platform corresponding to the broker, who provided you with the TC.TechnicalAnalysis Indicator



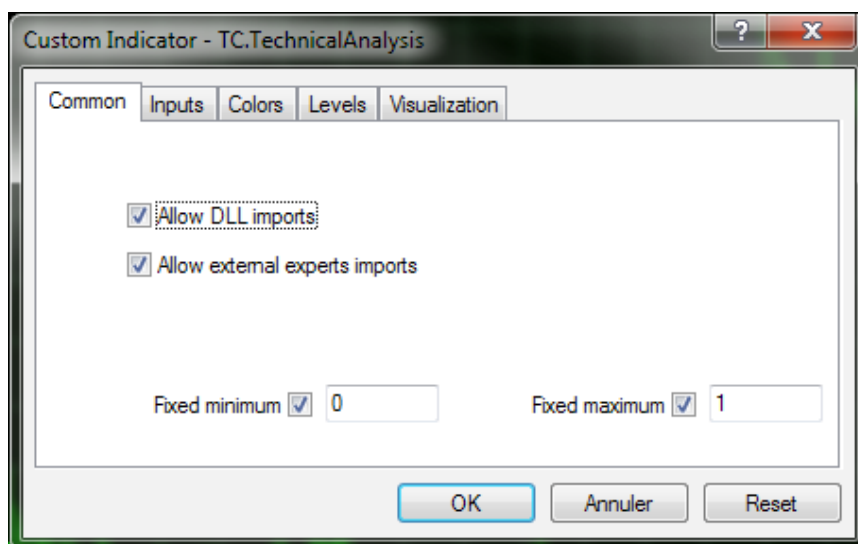


Now restart your MetaTrader.

Go to Navigator > Custom Indicators and look for TC.TechnicalAnalysis:

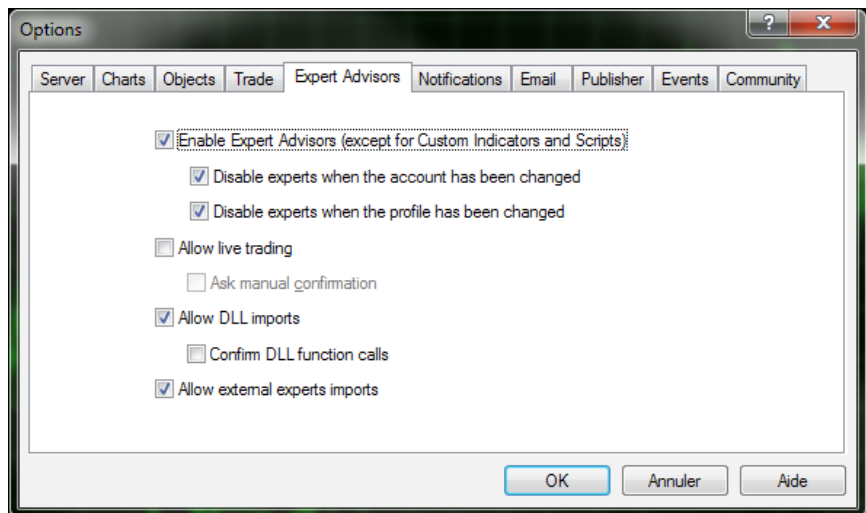


Drag and drop the Indicator to a chart and check Allow DLL imports option:



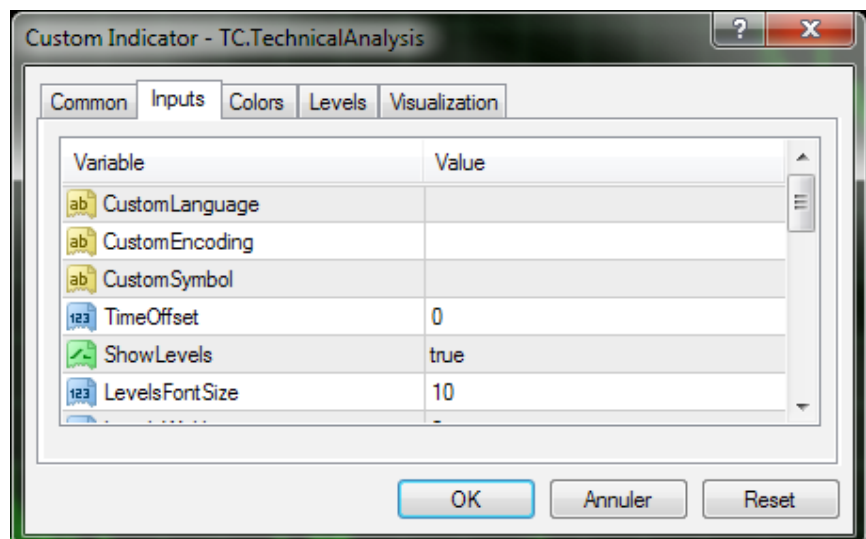
You can also enable this option once for all indicators and Expert Advisors:

Go to Tools > Options > Expert Advisors. Check Allow DLL imports. Make sure to not check Confirm DLL function calls (if you don't want to manually confirm every function from libraries execution)



In the same window (appeared when your drag and drop the Indicator to a chart), select the Inputs tab:

Here, you can set any parameters you wish to personalize the TC.TechnicalAnalysis Indicator.



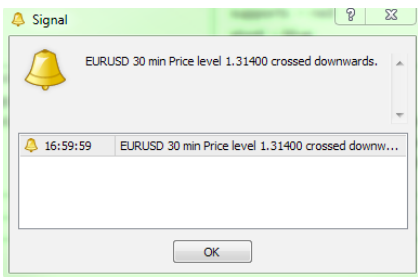
You have the possibility to choose one of 25 languages provided by Trading Central by specifying the necessary code in the "CustomLanguage" parameter (see Features and Parameters). Leave the CustomLanguage parameter empty if you want the Indicator to use the MetaTrader interface language you use currently.

If you would like to see our analyses in Portuguese, Romanian, Malay or Thai (languages which are not available in MetaTrader interface), just put the corresponding code (PT, RO, MS, TH) into the CustomLanguage field.

Whatever language you want to use, you need to have the correct setting in your system for non-unicode programs (see the Regional and Language Options in the control panel).

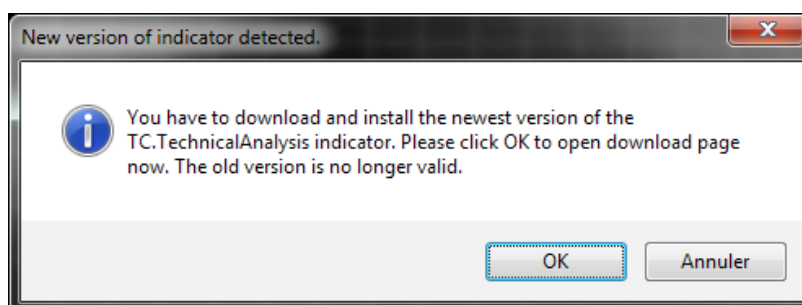
Features and parameters

Features	Default settings	Customizable (parameter name)																																																				
Attach TC levels to a chart: - pivot (invalidation) - supports (S1,S2,S3) - resistances (R1,R2,R3)	Display: true Font size: 10 Line width: 2 Color: resistances – green supports – red pivot – blue	(ShowLevels) (LevelsFontSize) (LevelsWidth) (LevelsResistanceColor)(LevelsSupportColor) (LevelsPivotColor)																																																				
Display a technical analysis for the selected periodicity	Display: true Font size: 10 Font color: Yellow Font: Verdana	(ShowStory) (StoryFontSize) (StoryTextColor) (StoryCustomFont)																																																				
Possibility to change the language of the technical analysis	<p>The language of your MetaTrader interface (retrieved automatically).</p> <p>If you use the language, which is not covered by our analyses, then the English version will be loaded.</p> <p>The condition for the correct displaying of non-unicode languages:</p> <p>you have to choose the corresponding language setting for non-Unicode programs</p> <p>(see the Regional and Language Options in the control panel)</p>	<p>(CustomEncoding).</p> <p>Normally there is no need to set encoding manually, but we leave this parameter to be customizable</p> <p>(CustomLanguage)</p> <p>Possible values (you have to put a code only):</p> <table border="1"> <thead> <tr> <th>code</th> <th>language</th> </tr> </thead> <tbody> <tr><td>EN</td><td>ENGLISH</td></tr> <tr><td>FR</td><td>FRENCH</td></tr> <tr><td>DE</td><td>GERMAN</td></tr> <tr><td>ES</td><td>SPANISH</td></tr> <tr><td>IT</td><td>ITALIAN</td></tr> <tr><td>NL</td><td>DUTCH</td></tr> <tr><td>RU</td><td>RUSSIAN</td></tr> <tr><td>ZH_CN</td><td>SIMPLIFIED CHINESE</td></tr> <tr><td>JA</td><td>JAPANESE</td></tr> <tr><td>AR</td><td>ARABIC</td></tr> <tr><td>PT</td><td>PORTUGUESE</td></tr> <tr><td>TR</td><td>TURKISH</td></tr> <tr><td>RO</td><td>ROMANIAN</td></tr> <tr><td>ZH_TW</td><td>TRADITIONAL CHINESE</td></tr> <tr><td>PL</td><td>POLISH</td></tr> <tr><td>HE</td><td>HEBREW</td></tr> <tr><td>KO</td><td>KOREAN</td></tr> <tr><td>ID</td><td>INDONESIAN</td></tr> <tr><td>MS</td><td>MALAY</td></tr> <tr><td>TH</td><td>THAI</td></tr> <tr><td>SV</td><td>SWEDISH</td></tr> <tr><td>PT_BR</td><td>BRASILIAN</td></tr> <tr><td>CZ</td><td>CZECH</td></tr> <tr><td>SK</td><td>SLOVAK</td></tr> <tr><td>HU</td><td>HUNGARIAN</td></tr> </tbody> </table>	code	language	EN	ENGLISH	FR	FRENCH	DE	GERMAN	ES	SPANISH	IT	ITALIAN	NL	DUTCH	RU	RUSSIAN	ZH_CN	SIMPLIFIED CHINESE	JA	JAPANESE	AR	ARABIC	PT	PORTUGUESE	TR	TURKISH	RO	ROMANIAN	ZH_TW	TRADITIONAL CHINESE	PL	POLISH	HE	HEBREW	KO	KOREAN	ID	INDONESIAN	MS	MALAY	TH	THAI	SV	SWEDISH	PT_BR	BRASILIAN	CZ	CZECH	SK	SLOVAK	HU	HUNGARIAN
code	language																																																					
EN	ENGLISH																																																					
FR	FRENCH																																																					
DE	GERMAN																																																					
ES	SPANISH																																																					
IT	ITALIAN																																																					
NL	DUTCH																																																					
RU	RUSSIAN																																																					
ZH_CN	SIMPLIFIED CHINESE																																																					
JA	JAPANESE																																																					
AR	ARABIC																																																					
PT	PORTUGUESE																																																					
TR	TURKISH																																																					
RO	ROMANIAN																																																					
ZH_TW	TRADITIONAL CHINESE																																																					
PL	POLISH																																																					
HE	HEBREW																																																					
KO	KOREAN																																																					
ID	INDONESIAN																																																					
MS	MALAY																																																					
TH	THAI																																																					
SV	SWEDISH																																																					
PT_BR	BRASILIAN																																																					
CZ	CZECH																																																					
SK	SLOVAK																																																					
HU	HUNGARIAN																																																					

Our opinion on selected period (at the top right corner)	Display: true Font size: 14 Font color for RISE opinion: green Font color for DECLINE opinion: red	(ShowPreference) (PreferenceFontSize) (PreferenceRiseColor) (PreferenceDeclineColor)
The legend explaining the meaning of our levels	Display: true Font size: 10	(ShowLegend) (LegendFontSize)
Alerts on horizontal levels (when one of our levels is crossed upwards or downwards by the price level)	Enabled: true Alert example: 	(EnableAlerts)
Our levels and comment are adjustable to the selected period		INTRADAY analysis is shown when you choose M1, M5, M15, M30, H1 or H4 periods SHORT TERM analysis corresponds to D1 period MEDIUM TERM is used for W1 and MN (sometimes also for D1 when SHORT TERM analysis is not available)
Possibility to manually set the product to analyze	Automatically retrieved by the Indicator (when you apply it to a chart)	(CustomSymbol) Normally there is no need to set it manually, because we have all product codes used by brokers and this code is retrieved automatically from your chart. But, if the matching is not correct, you can type yourself here the correct symbol.

Upgrade process

When a new version of the Indicator is available, a user gets a notification inside their MetaTrader and the loading starts automatically after clicking the OK button.



The previous version is no longer valid.



www.ICMCapital.co.uk

ICM Capital Ltd (Headquarters)
Level 36,
One Canada Square
Canary Wharf, London,
E14 5AB, United Kingdom,

Tel: +44 207 634 9770
Fax: +44 207 516 9137

clientservices@ICMCapital.co.uk
www.ICMCapital.co.uk

Europe Middle East North Africa Asia



Best Forex ECN
Broker 2015



Best Forex Rewards
Programme 2014



Fastest Growing Online
Forex Broker 2013



Best Customer Service
Provider 2012



Best Forex
Broker 2011

 [facebook.com/ICMCapital](https://www.facebook.com/ICMCapital)

 [@ICMCapital](https://twitter.com/ICMCapital)

 [ICM Capital](https://www.linkedin.com/company/ICM-Capital)

 [ICMCapital](https://www.youtube.com/ICMCapital)

 [ICMCapital](https://plus.google.com/ICMCapital)



Engaging in CFDs or Spot FX carries a high risk to your capital. You should not engage in this form of investing unless you understand the nature of the Transaction you are entering into and the true extent of your exposure to the risk of loss. Your profit and loss will vary according to the extent of the fluctuations in the price of the underlying markets on which the trade is based.

ICM Capital Limited is authorised and regulated by the Financial Conduct Authority (FCA) Register Number: 520965.
ICM Capital Limited is a wholly owned subsidiary of ICM Holding SARL, Registered address: 121, Avenue De La Faiencerie, L-1511 Luxembourg.
ICM Capital Limited is a company registered in England and Wales, registered number: 07101360.
Registered address: Level 36, One Canada Square, Canary Wharf, London, E14 5AB, United Kingdom.
Dubai Rep. Office: Podium 8, Building 3, Bay Square, Business Bay, Dubai, UAE.

© Copyright ICM Capital Ltd 2011-2016 - All rights reserved.