

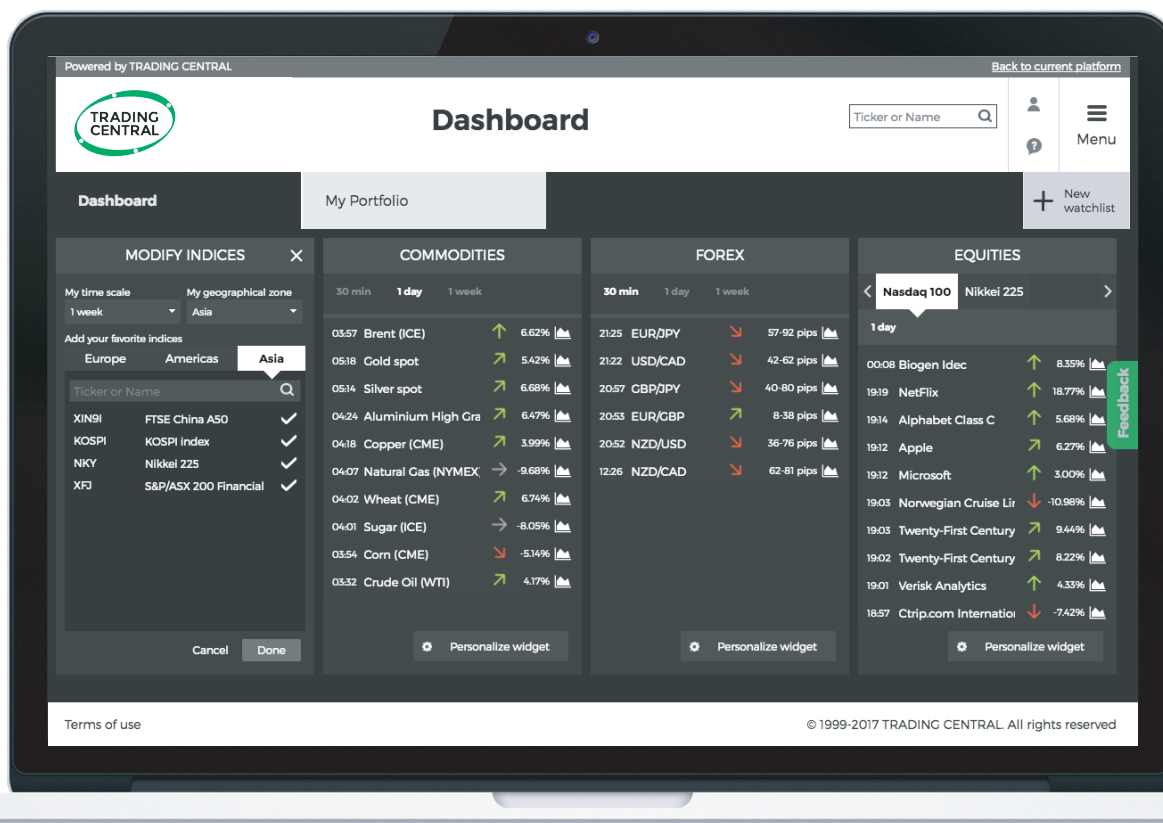
## Welcome to your new Research Platform!

Here you'll find all the award winning research you're used to from TRADING CENTRAL's research desks, with some great new functionalities:

- ✓ Detailed product research pages
- ✓ Personalized dashboard
- ✓ Up to 5 watch-lists
- ✓ Technical analysis education
- ✓ Easy search capabilities
- ✓ Full language control

### What this guide covers

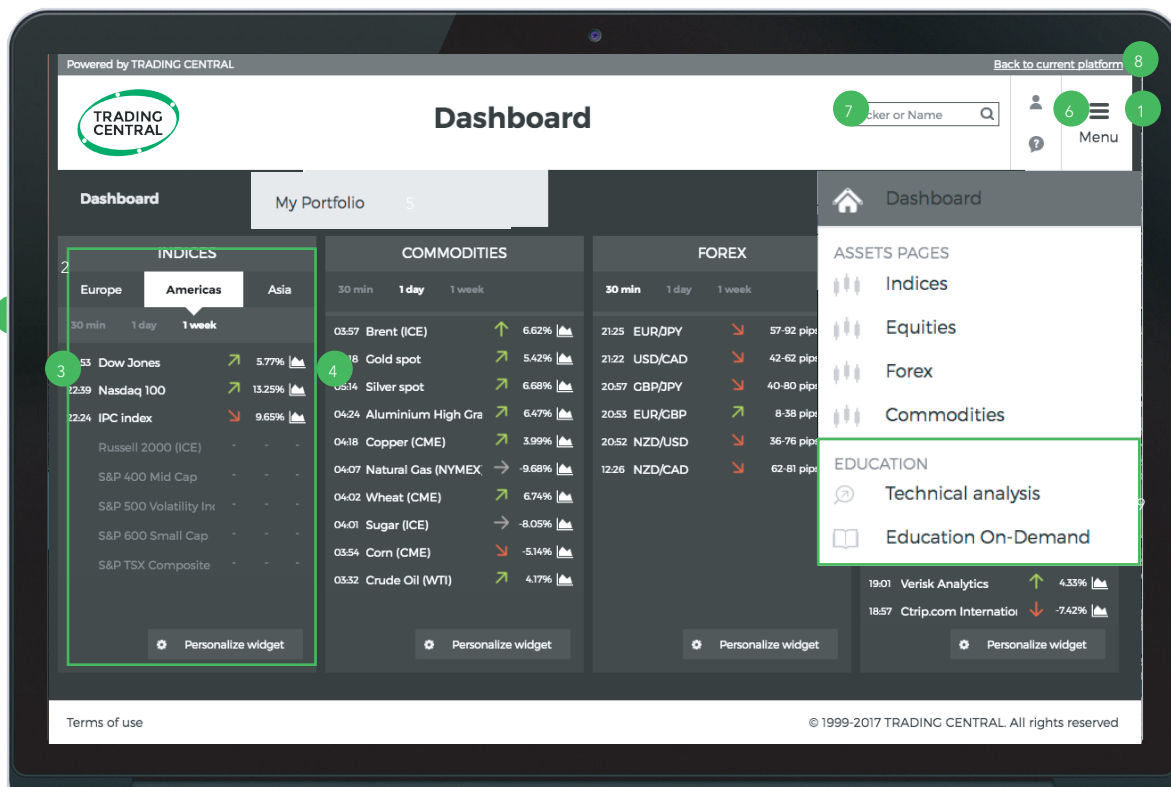
Navigating the Key Features.....	2	Finding Detailed Research .....	5
Personalize the Platform.....	3	Creating A Watchlist.....	7
Personalize the Dashboard.....	4		



## Navigating the Key Features

Welcome to your new dashboard! Here, you'll find your existing portfolio transferred into a watchlist. Below is a quick overview of the new features and where you can find them.

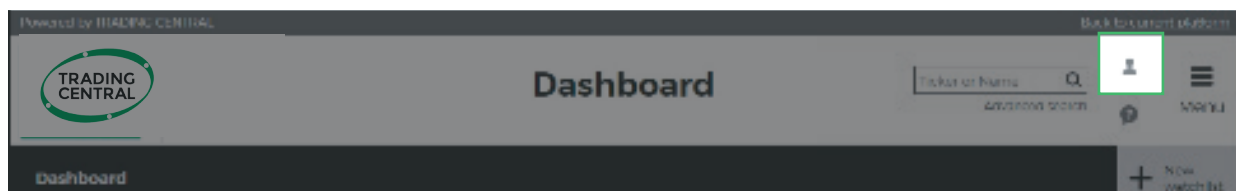
1. Menu: Easily find all your asset pages and educational material.
2. Widget: Each widget contains the most recent research on a specific asset class, sorted by exchange, region and/or timeframe.
3. Product View: To view the details on any asset, click on it's title.
4. Price Chart: Hover here to view the most recent chart for this product.
5. Watchlists: Save products of interest, such as those in your portfolio in easy-to-access watchlists.
6. Profile: Customize your platform details such as timezone, language and style of alert.
7. Quick Search: Find research on your favourite product by entering the first three letters of the symbol or name.
8. Back to Current Platform: Not quite ready for the change? No problem! Here, you'll be returned to the legacy platform.
9. Education: Take control of your trading experience and learn from the best!



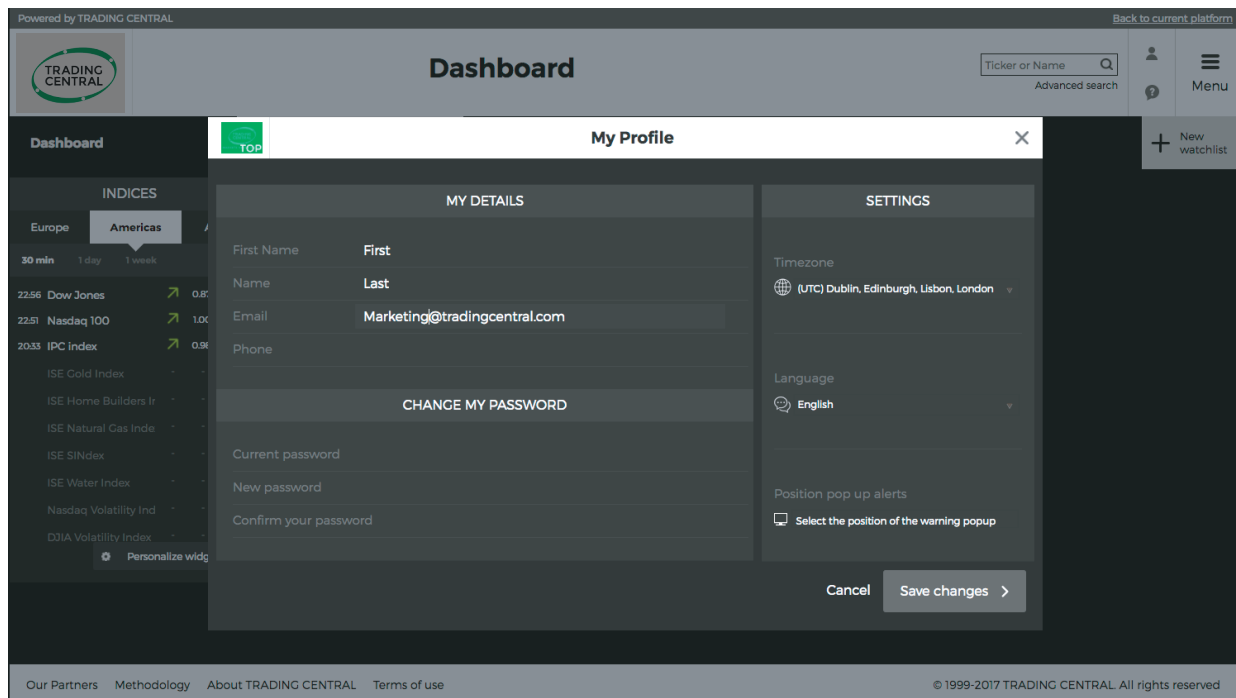
## Personalize your Platform

The new TC Research Platform comes with a variety of customization features. You can start by building your profile.

1. To edit your profile, click on the user icon in the top right corner.

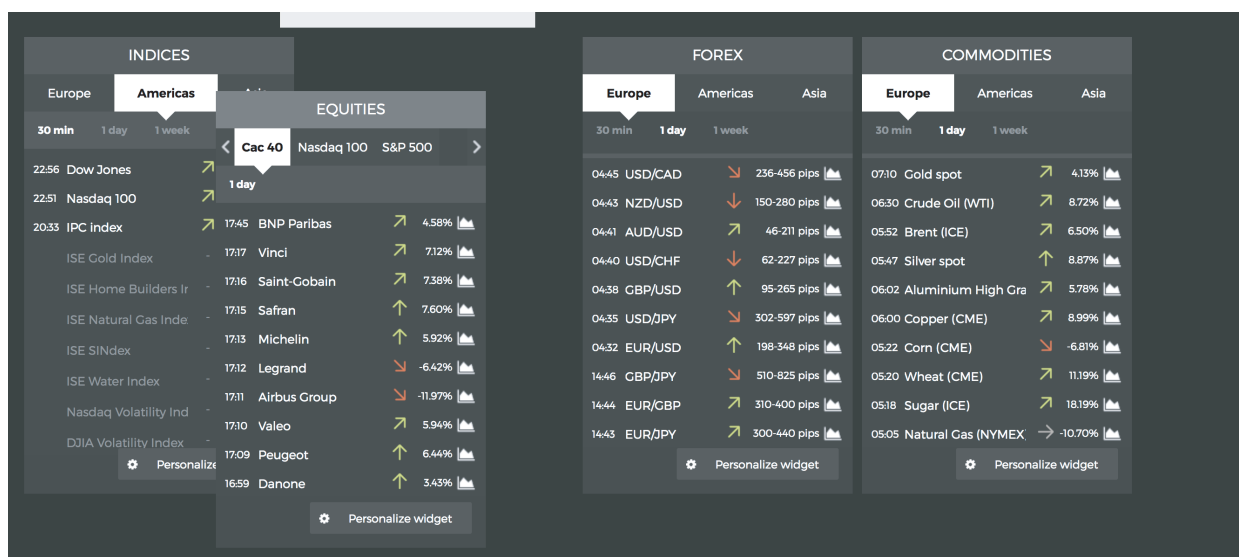


2. From the profile pop-up, you can edit your login details, your timezone, preferred language, the position of popup alerts and change your password.

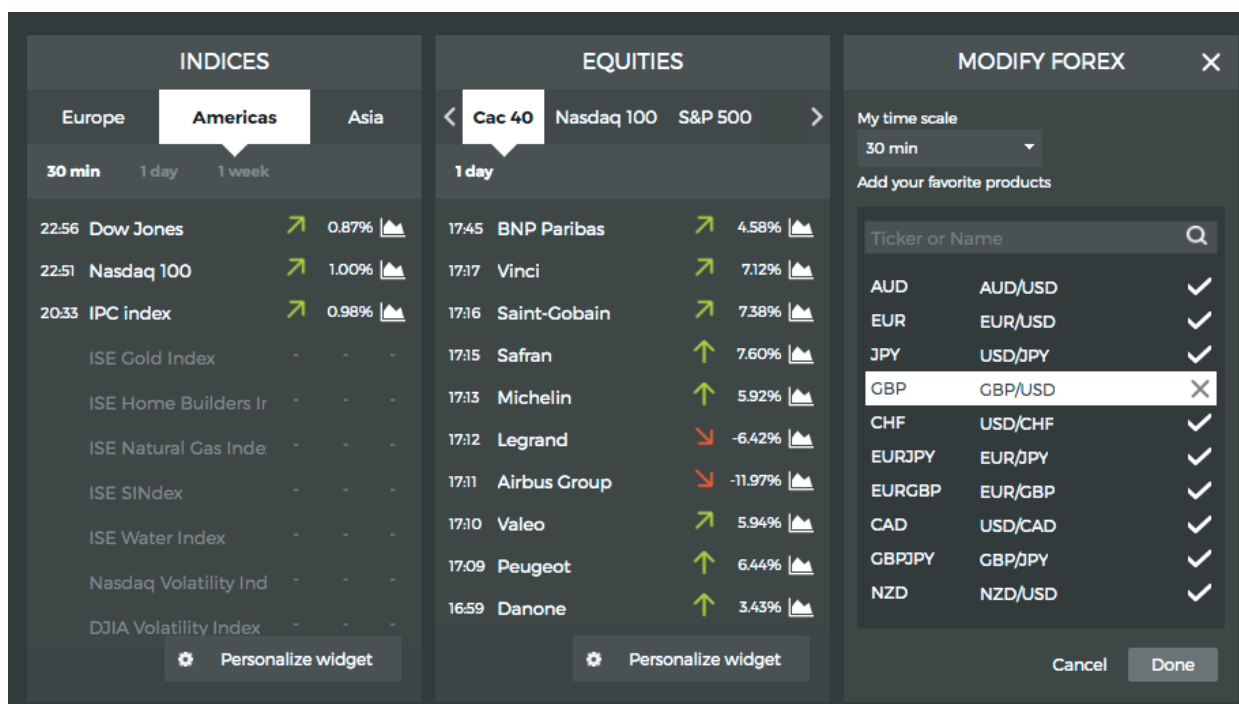


## Personalize your Dashboard

1. Rearrange the widgets however you like by clicking and dragging them by their headers.



2. By clicking the “Personalize Widget” button, you can choose to display or hide any asset by timeframe.



## Finding Detailed Research

Detailed research on an asset can be accessed in three simple ways.

1. Click any widget header to view the detailed research on it's assets

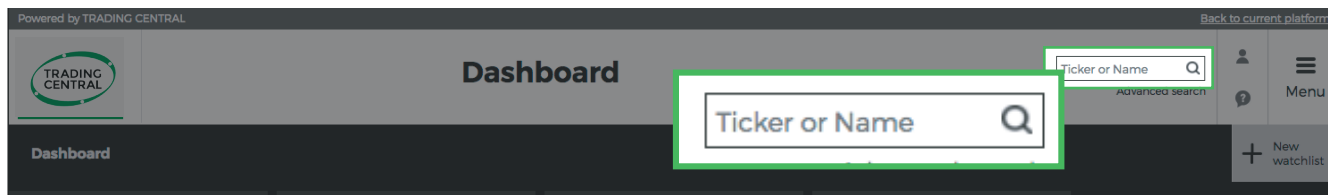
The screenshot displays the ICM Research Platform interface. On the left, there is a 'FILTER' sidebar with options for 'FREE SEARCH' (Ticker or Name), 'ADVANCED SEARCH' (reset, Saved filters, Select a filter...), 'Time frame' (All), and 'Trend' (directional arrows). The main area shows a table of assets with columns for ticker, date, description, and price/movement. A 'FUTURES AND INDICES' sidebar on the right lists various market indices with their respective trends.

Asset	Date	Description	Price	Change	Time
EURJPY	10/19/2017	EUR/JPY Intraday: the bias remains bullish.	25-65 PIPS	↗	30 min
CHF	10/19/2017	USD/CHF Intraday: intraday support around 0.9790.	10-35 PIPS	↗	30 min
GBP	10/19/2017	GBP/USD Intraday: further advance.	15-50 PIPS	↗	30 min
JPY	10/19/2017	USD/JPY Intraday: bullish bias above 112.65.	20-50 PIPS	↗	30 min
EUR	10/19/2017	EUR/USD Intraday: further advance.	20-40 PIPS	↗	30 min
AUD	10/19/2017	AUD/USD Intraday: the upside prevails.	20-40 PIPS	↗	30 min
EURJPY	10/18/2017	EUR/JPY Intraday: the upside prevails.	20-60 PIPS	↗	30 min
GBPJPY	10/18/2017	GBP/JPY Intraday: towards 149.40.	16-51 PIPS	↗	30 min
NZDJPY	10/18/2017	NZD/JPY intraday: target 79.82	76-98 PIPS	↘	30 min
EURAUD	10/18/2017	EUR/AUD intraday: as long as 1.4990 is support look for 1.5117	84-112 PIPS	↗	30 min
CHFJPY	10/18/2017	CHF/JPY intraday: as long as 114.86 is support look for 115.94	72-95 PIPS	↗	30 min
CADJPY	10/18/2017	CAD/JPY intraday: as long as 90.28 is support look for 91.31	72-95 PIPS	↗	30 min
EURCHF	10/18/2017	EUR/CHF Intraday: the upside prevails.	24-39 PIPS	↗	30 min
EURGBP	10/18/2017	EUR/GBP Intraday: the upside prevails.	19-44 PIPS	↗	30 min
TWD	10/18/2017	USD/TWD intraday: the RSI is overbought	100-131 PIPS	↗	30 min
KRW	10/18/2017	USD/KRW intraday: above its upper Bollinger band	583-773 PIPS	↗	30 min
EURCNH	10/18/2017	EUR/CNH intraday: the upside prevails as long as 7.81 is support	409-609 PIPS	↗	30 min
CNHJPY	10/18/2017	CNH/JPY intraday: the downside prevails as long as 17.08 is resistance	11-15 PIPS	↘	30 min
ZAR	10/18/2017	USD/ZAR intraday: as long as 13.5010 is support look for 13.7150	1464-1954 PIPS	↗	30 min
ZARJPY	10/18/2017	ZAR/JPY intraday: rebound towards 8.4231	976-1294 PIPS	↗	30 min
MXN	10/18/2017	USD/MXN intraday: as long as 18.8057 is support look for 19.0349	1564-2084 PIPS	↗	30 min
			2071-2754 PIPS	↗	30 min
			18-38 PIPS	↘	30 min
			327263-434374 PIPS	↗	30 min
			188-248 PIPS	↘	30 min
			311-414 PIPS	↗	30 min
			976-1289 PIPS	↗	30 min
			25-45 PIPS	↗	30 min
			543-723 PIPS	↗	30 min
			425-550 PIPS	↗	30 min

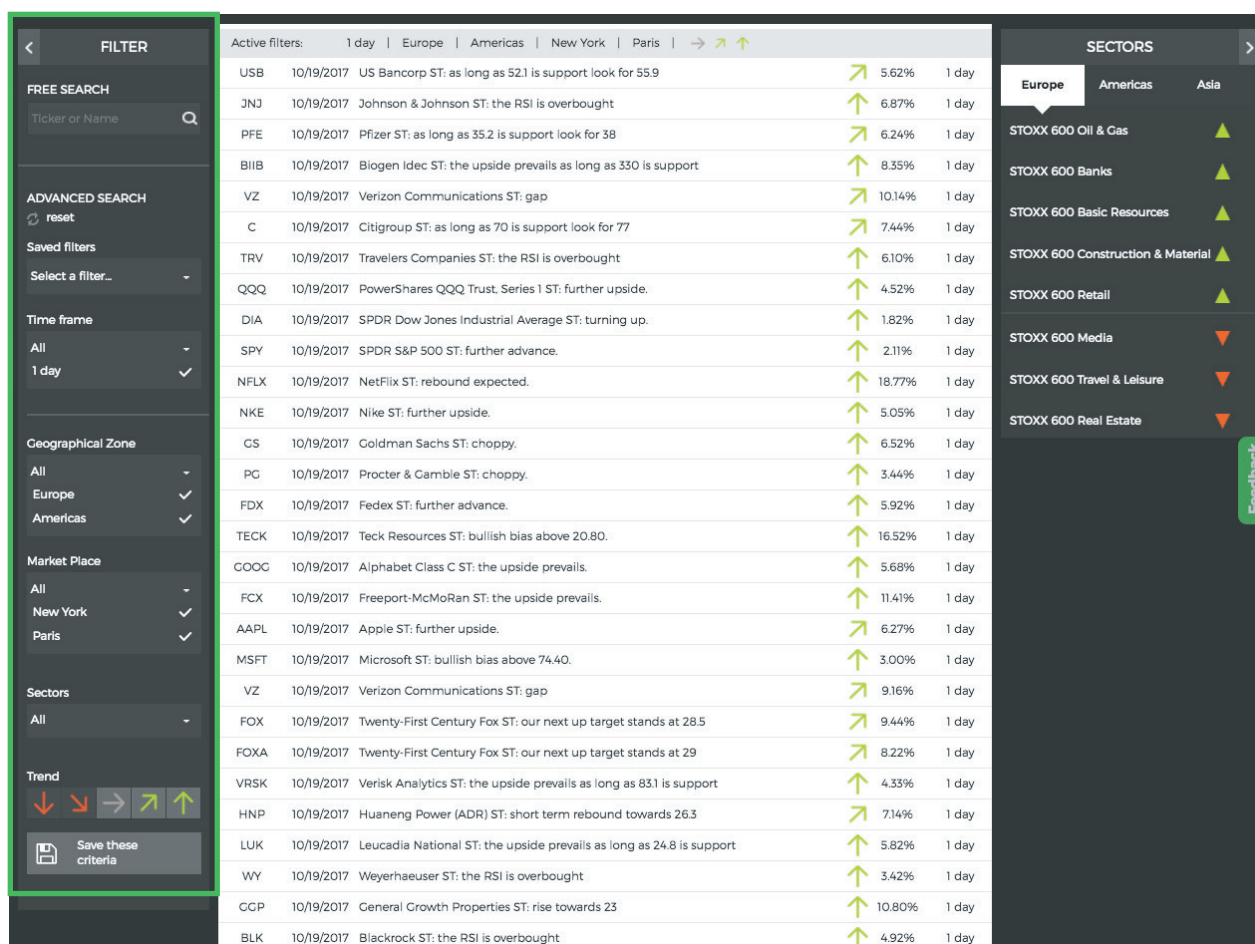
The 'FUTURES AND INDICES' sidebar includes: Dollar Index (↘ 1 day), Gold (CME) (↗ 1 day), Silver (CME) (↗ 1 day), Copper (CME) (↗ 1 day), Crude Oil (WTI) (↗ 1 day), S&P 500 (↗ 1 day), STOXX 600 (↗ 1 day), S&P-ASX 200 (→ 1 day), CSI 300 Index (↗ 1 day), and Hang Seng (↗ 1 day).

The tablet in the foreground shows the 'Dashboard' view with sections for 'EQUITIES', 'COMMODITIES', and 'FOREX'. A 'MODIFY INDICES' window is open, showing a list of indices with checkboxes and a search bar.

2. Search for a specific product using the search bar capability.



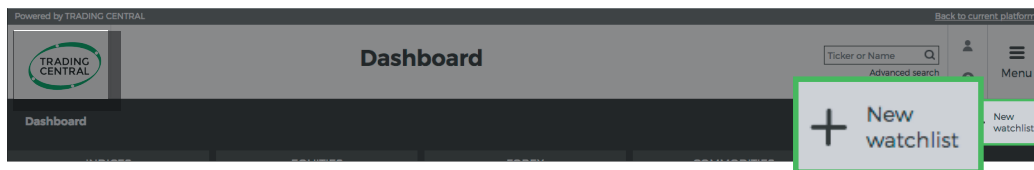
3. Filter by desired criteria using the filters to the left of each asset page.



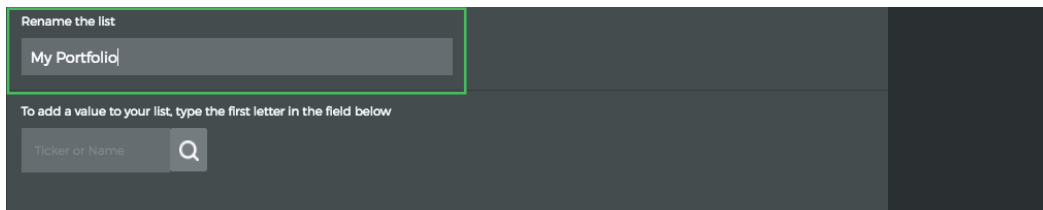
### Create a Watchlist

Create up to five watchlists to keep your eye on products of interest. This is where any pre-existing portfolios will be found.

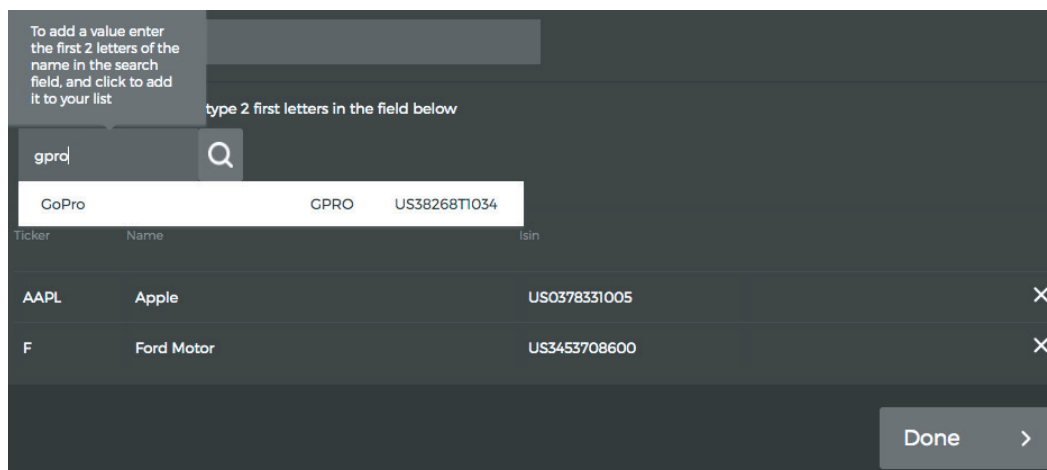
1. Click the "New Watchlist" button in the top right corner of your dashboard.



2. Name your watchlist.



3. Select the products you would like and click done.



4. You'll find all saved watchlists next to the dashboard tab.

